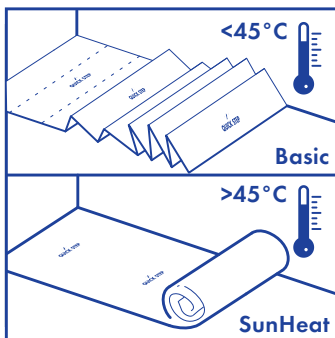


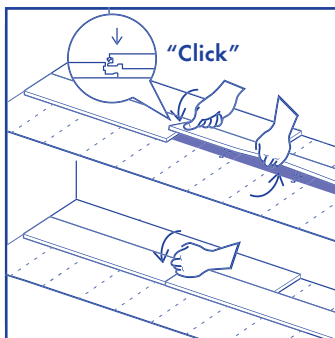
Install your floor between 18 and 30° C.

Quick-Step Livyn must be acclimatized in the room of installation between 18-30°C (64-86°F) for a period of at least 48 hours before installation. This floor & room temperature needs to be maintained prior to, during and for at least 24 hours after the installation is completed.



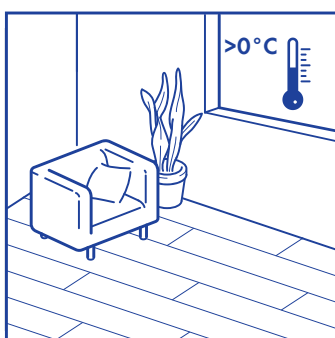
Use a special underlay above 45° C.

Quick-Step Livyn has been designed for indoor heated (> 0°C) (32°F) installations. It cannot be installed in solariums, seasonal porches, camping trailers, boats or unheated applications without being glued. If the temperature of your floor raises above 45°C (113°F), for instance due to direct sunlight, it is recommended to use the Sun/Heat underlay or to install without underlay on a levelled mineral subfloor. If you have any concerns about the temperature of your floor, please contact the Quick-Step technical department.



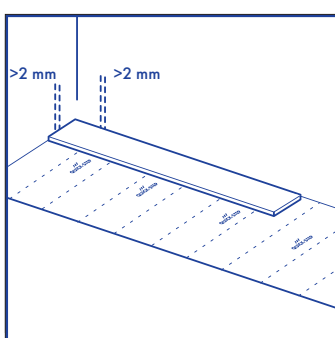
Click-it! Never use a hammer or tapping block.

Slightly lift the plank to be installed by holding your hand underneath. Push the short side joint down gently with your thumb moving from the inner corner towards the outside until you hear a "click". Ensure the short side ends are closed by knocking gently on the short side click connection with your wrist. Don't use a hammer or tapping block as it may possibly harm your click connection. This is the easiest method for fitting the Uniclic® Multifit for Livyn click panels.



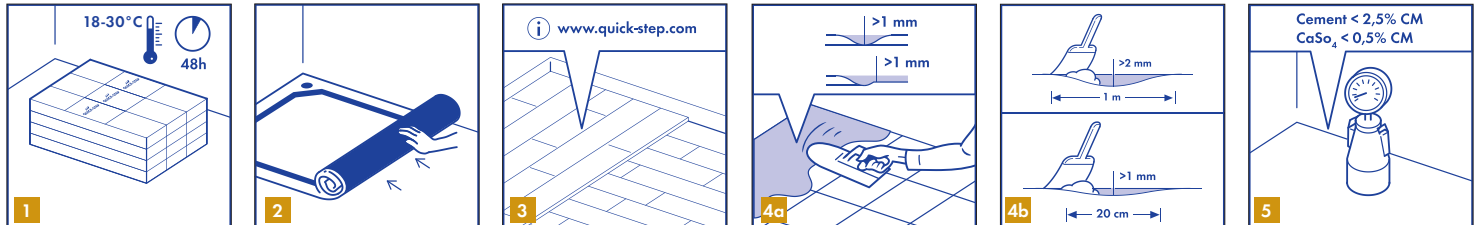
Keep indoor climate conditions above 0° C.

Ensure that the indoor climate conditions are always kept > 0°C (32°F) and preferably between 18-30°C (64-86°F).



Make sure that you leave an expansion joint of minimum 2 mm.

IN ORDER TO OBTAIN A GOOD RESULT, WE ADVISE TO FOLLOW ALL GIVEN INSTRUCTIONS CAREFULLY.



1. PREPARATION

We recommend to order all panels for a commercial flooring project at the same time.

1

Always store and transport Quick-Step Livyn carefully to prevent distortions. Store and transport the boxes on a flat surface in neat stacks. Never store the boxes upright or in moist, dusty rooms or places with extreme temperatures. Quick-Step Livyn must be acclimatized in the room of installation between 18-30°C (64-86 °F) for a period of at least 48 hours before installation. This floor & room temperature needs to be maintained prior to, during and for at least 24 hours after the installation is completed.

2

The type of subfloor, its quality and its preparation have a big influence on the final installation result. If the subfloor is not appropriate for the installation of Quick-Step Livyn then necessary actions should be taken. Contact your Quick-Step Livyn dealer, who will be more than happy to help you. Be aware that unevennesses in the subfloor may leave marks in your Quick-Step Livyn floor.

The subfloor should be stable and firmly fixed. Furthermore it cannot be soft, damaged or loose laid. The following floor coverings have to be removed: Carpet, needle felt, cushion vinyl, floating laminate and parquet, etc. Does not have to be removed: ceramic tiles, PVC, VCT, glued laminate and parquet, fixed wood boards, etc. Does not have to be removed, but use of PE foil is mandatory to avoid migration: glued PVC, glued linoleum and glued oiled parquet.

3

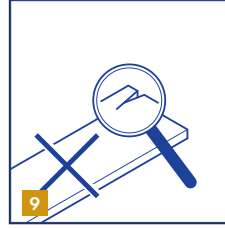
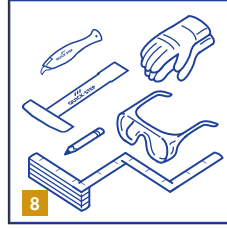
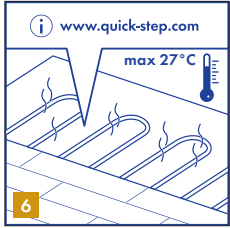
In case of installation on a wooden subfloor, please remove any existing floor covering first. No signs of mould and/or insect infestations should be present. Make sure the subfloor is level and nail down any loose parts. Apply an appropriate wooden levelling board level floor or levelling compound on top for a perfect subfloor preparation. The levelling boards must be fixed every 30 cm with screws. The crawl space under the plank floor must be sufficiently ventilated. Remove any obstacles and make sure there is sufficient ventilation (minimum 4 cm² total ventilation openings per m² of floor). The moisture content of the wood must not exceed 10%.

4

Make sure the subfloor is completely flat. Cement joints of more than 1 mm in depth and 4 mm in width should be levelled out using an appropriate primer and levelling compound. Any unevenness of more than 1 mm over a length of 20 cm must be levelled out. Bumps should be removed by sanding or scraping. The same applies to unevennesses of more than 2 mm over a length of 1 m. Use an appropriate levelling compound and check if a primer or sealer is needed with the supplier. In some cases, the use of an underlay can avoid extra levelling of the subfloor.

5

The moisture content of the subfloor must be less than 2,5% CM (cement screed) or less than 0,5% CM (anhydrite subfloor). In the case of floor heating, results must be respectively 1,5% CM and 0,3% CM. Always measure, record and keep your moisture content results.

**6**

Floor heating systems (water / electricity) which are built-in the screed can be used with Quick-Step Livyn if a constant room & floor temperature of 18°C (64°F) can be guaranteed during acclimatization, installation and 48h after installation. For health and safety reasons, a floor surface temperature of maximum 27°C (80°F) must be maintained. Separate rooms with and without floor heating or with different temperature controllers should be installed with a transition profile. For a good preparation, read also the separate installation instructions for floor heating on www.quick-step.com.

7

Make sure that the subfloor is dry, flat, stable, clean and free from grease and chemical substances. If needed, scrape off and clean up old adhesives. Prior to installation, carefully remove all debris (including nails), sweep and vacuum. Repair major surface imperfections and large cracks. It is recommended to remove old skirtings and to install new ones after the installation of the floor.

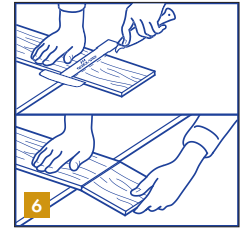
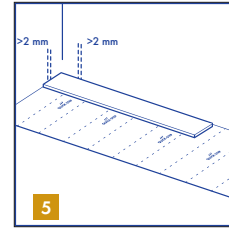
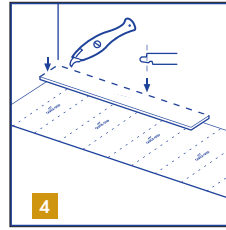
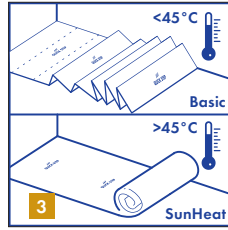
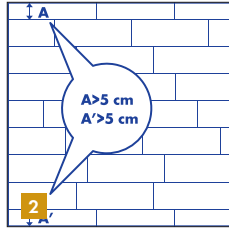
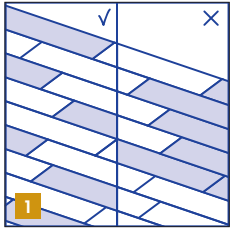
8

The following standard tools are needed: measurer, safety glasses, thin rope, gloves and a pencil. In addition to the standard tools, we recommend to use the Quick-Step Livyn concave cutter knife and installation tool. The latter serves as a 2-in-1 pulling bar and carpenter's square.

The use of all accessories other than Quick-Step Livyn accessories may cause damage to your Quick-Step Livyn. In such case the guarantee provided by Quick-Step will be void. For this reason we advise to use only Quick-Step Livyn accessories, which have been specially designed and tested for use with your Livyn. Never use a tapping block during the installation of Quick-Step Livyn.

9

Check all panels before and during installation in optimal light conditions. Defective panels must never be used.



2. INSTALLATION

1

During installation, make sure that you mix up the floor panels sufficiently so that there are not too many identical, lighter or darker panels next to each other. To obtain the best visual effect, it is best to fit the panels in the direction of the longest wall and parallel to the incidence of light. Ensure that the end joints of the panels in 2 successive rows are never in line, they should be staggered by at least 30 cm.

2

Measure the room before you start fitting. Make sure that the last row of panels is at least 5 cm wide when finishing the installation.

3

Quick-Step Livyn has been designed for indoor heated ($> 0^{\circ}\text{C}$) (32°F) installations. It cannot be installed in solariums, seasonal porches, camping trailers, boats or unheated applications without being glued. If the temperature of your floor raises above 45°C , for instance due to direct sunlight, it is recommended to use the Sun/Heat underlay or to install without underlay on a levelled mineral subfloor. If you have any concerns about the temperature of your floor, please contact the Quick-Step technical department.

4

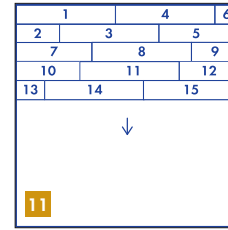
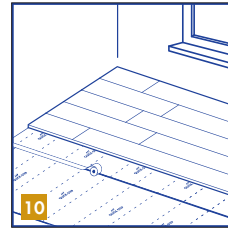
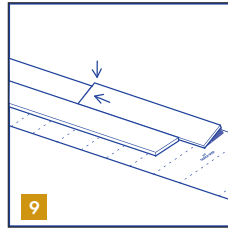
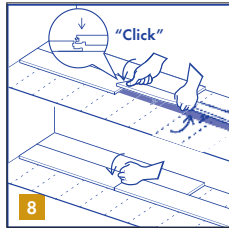
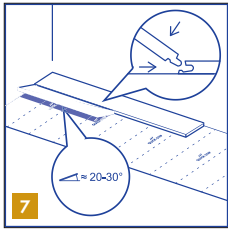
First, start in the left corner of the room and fit an underlay if needed. The underlay should be installed progressively together with the floor installation. We strongly recommend to use the special Quick-Step Livyn underlays, which have an insulating, sound-reducing and levelling function. An underlay which is too soft or made from the wrong material will damage your floor. A laminate/parquet underlay is not suitable for click LVT. You can find out more information about them and how to use them on the packaging of your underlay or from your dealer. Start the first row with a whole plank. Cut off the long side tongue of the click of first panel.

5

Fit the plank with cut off sides against the walls. Make sure that you leave an expansion joint of 2 mm. For installations with floor heating, we recommend to leave an expansion gap of 5 mm.

6

Quick-Step Livyn can easily be cut using a cutter or utility knife with the decor side face up. When cutting the vinyl plank, mark the line and use the knife to make a firm cut in the surface. Then break off the plank using both hands.



7

Turn the long side of the first panel of the second row into the already fitted panel at an angle of 20 to 30°. Move the panel to be fitted slightly up and down and at the same time exert some forward pressure. The panels will click together.

8

Then slide the third plank together horizontally. Slightly lift the plank to be installed by holding your hand underneath. Push the short side joint down gently with your thumb moving from the inner corner towards the outside until you hear a "click". Ensure the short side ends are closed by knocking gently on the short side click connection with your wrist. Don't use a hammer or tapping block as it may possible harm your click connection.

This is the easiest method for fitting the Uniclic® Multifit for Livyn click panels.

9

Now connect the panels of the first two rows on the short sides.

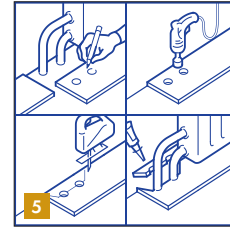
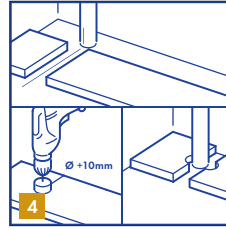
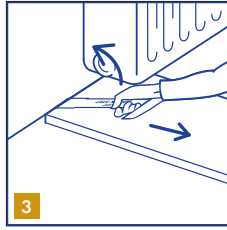
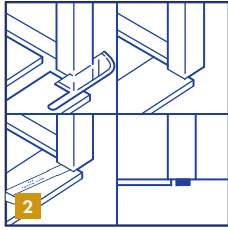
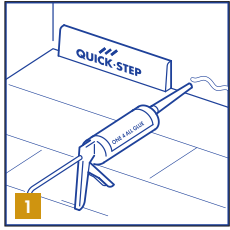
Check the expansion gap of and make sure the first rows are on a perfect straight line. You can check this by holding a thin rope along the installed planks and adjust the straightness of your floor when necessary. An expansion gap of 2 mm (0,08 inch) along the perimeter should be maintained. In the width and in the length direction of the planks there is no need for extra expansion gaps.

10

When the remaining piece of underlay is shorter than the width of a panel, install the next underlay. It is recommended to connect the underlays using thin tape.

11

Continue the installation like this row by row towards the end of the room. Always check each joint before continuing. You can press down gently with your thumb on top of every short end joint to ensure good locking.



3. FINISHING

1

Inspect the final surface of the installed floor. Install Quick-Step Livyn skirtings against the wall but never attach the skirting to the floor itself. In places where profiles or skirtings cannot be placed, fill the expansion gaps with an elastic filler like the Quick-Step Livyn Kit. For rooms with a high moisture level like bathrooms, Quick-Step Livyn Hydrokit can be used.

2

When the new flooring meets a threshold or a doorway, we recommend undercutting the moldings. To secure the right cut, turn a plank upside down and place it on the floor up to the door frame. Then place the Quick-Step Livyn hand saw flat against the plank and simply cut through the frame. Remove the cut out and vacuum away debris. You can now simply click the plank in on the long side at the side of the undercutted molding. Use the Quick-Step Livyn installation tool as a pull bar to secure absolute tightness in the long and short joint.

3

If it is difficult to tilt the planks (e.g. under radiators), use the Quick-Step Livyn installation tool to pull the panels together.

4

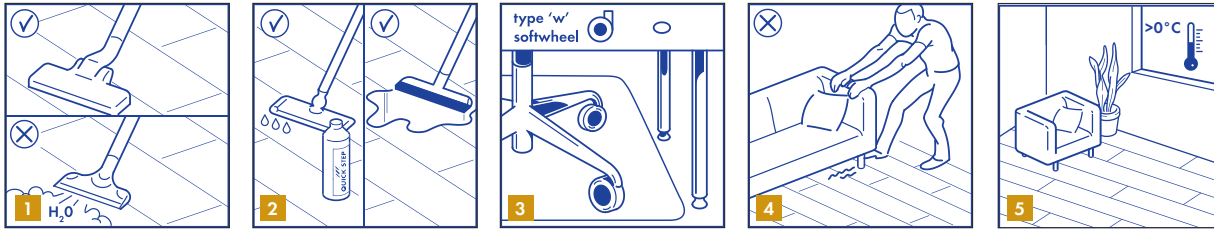
In rows where there is a pipe, make sure the pipe falls exactly in line with the short side of two panels. Take a drill bit with the same diameter as the pipe plus 10 mm. Click the panels together on the short side and drill a hole centered on the joint between the two panels. Now you can install the panels.

5

In case of a double pipe, drill a hole at each of the marked points that is equivalent to the diameter of the pipes plus 10 mm. If located on the long side of the plank, make a 45 degree cut from each hole to the edge of the plank.

6

Then, using an appropriate glue along the cut edges of the piece you cut out, glue the piece in place. Be sure no glue comes between the cut out piece and the subfloor.



4. MAINTENANCE

You can immediately walk on your new Quick-Step Livyn floor after installation.

1

It is allowed to use a vacuum cleaner on your vinyl floor. The use of a steamcleaner is forbidden.

2

Your vinyl floor can be cleaned with a damp or wet mop.

Quick-Step Livyn Clean is a maintenance product specifically developed to keep your new Livyn floor in top condition. For further information on how to clean and maintain your floor, please visit www.quick-step.com. For specific cleaning instructions in commercial applications or projects, you can contact the Quick-Step technical department.

Always remove spilled liquids immediately from the floor.

3

Protect furniture and chair legs. Use (office) chairs type W and seats with soft wheels that are suitable for a vinyl floor and/or use a suitable desk mat.

4

Never drag heavy items of furniture over the floor but lift them up. Make sure furniture legs have a large surface and are provided with non-staining floor protectors. The taller and/or wider the furniture feet are, the greater the repartition of weight will be on the floor and the less chance there is to damage the floor.

Place non-rubber backed mats at all outside entrances to prevent dirt, grit and soil from being tracked onto your floor. This will reduce damages, the maintenance requirement and extend the life of your floor. Please note that prolonged contact with rubber can cause a permanent stain.

Do not allow cigarettes, matches or other very hot items to contact the floor as this may cause permanent damage.

5

Ensure that the indoor climate conditions are always kept $> 0^{\circ}\text{C}$ (32°F) and preferably between $18\text{-}30^{\circ}\text{C}$ ($64\text{-}86^{\circ}\text{F}$). If the floor temperature exceeds 45°C (113°F), use the Sun/Heat underlay or install without underlay on a levelled mineral subfloor.